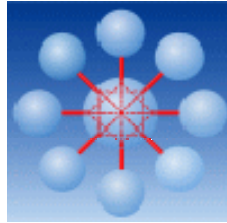


EDI Handbook



GM01

Presentation notification for Sign-On procedure ECS of the Dutch customs via the Data Communication System Portbase for the ports Amsterdam and Rotterdam

Version 1.1/E

Function	Name	Signature	Date
Created by:	C. Wegner		on: 17. Mai 2009
Changed by:	C. Wegner		on: 17. Mai 2009
Released by:			on:
Storing Place			
File:	Q:\projekte\EDI\Handbuecher\AES\AES-NL GM01 für Portbase\GM01 ECS Portbase V1.1en.doc		
Distributor:			

List of amendments

Version	Art der Änderung	Änderung durch, Datum	Freigegeben durch, Datum
1.0/E	Creation of document	C. Wegner 17.05.2009	1.0/D
1.1 / D	Revision of document	C. Wegner 08.12.2009	C. Wegner 08.12.2009

Amendment Service:

DAKOSY
Datenkommunikationssystem AG
Mattentwiete 2
20457 Hamburg
Telefon: 040 / 37003-0
Fax: 040 / 37003-570
Email: info@dakosy.de

Configuration data:

The document EDI handbook „ **GM01 Portbase ECS Netherlands** " was created with the word processing programme WORD 2003.

The programme GEFEG.FX by GEFEG from Berlin was used for the compilation of the EDIFACT-specific diagrams and tables.

Table of contents:

1	Introduction.....	4
2	DAKOSY-Frame while sending and receiving data.....	5
2.1	The initialisation record	6
2.2	The Sign-On record.....	7
2.3	The completion record	8
2.4	The receipt record	9
2.5	The reference confirmation record.....	Fehler! Textmarke nicht definiert.
3	Service segments.....	10
3.1	Formatting rules for the data transfer.....	10
3.2	Explanations to the message structure	11
3.3	Specific content of segments (only contents, that are used for customs declaration ECS Netherlands are listed)	12
3.4	UNA separator default	13
3.5	Status and application signs	13
3.6	UNB Interchange-header segment.....	14
3.7	UNH Message – header segment.....	15
3.8	UNT Message trailer.....	16
3.9	UNZ Interchange trailer	17
4	Message structure.....	18
5	GM01 AES specifics.....	20
6	Assignment of AES GM01 fields to the EDIFACT segments.....	42
	(Marking of mandatory fields for ECS Netherlands)	42
7	Examples.....	44
7.1	Examples of a presentation notification for ECS Netherlands	44
8	Appendix.....	44
A	Checking of container numbers	44
B	Structure and checking of the Movement Reference Number (MRN)	49
9	Process description for the communication with Portbase for ECS Netherlands	51
9.1	Process procedure error- free data sequence at Dakosy and ECS/Portbase.....	51
9.2	Process procedure to ECS/Portbase error message.....	52

1 Introduction

This handbook was created as amendment to the handbook DAKOSY message GM01 „Presentation Notification“.

It describes the message, which is to be sent to the port system Portbase for the customs procedure ECS of the Dutch customs.

Unlike the customs declarations at ZAPP, there are no port references generated for those messages, so that all confirmations refer to the forwarder's reference.

Furthermore it should be noted that the indication of the booking number is mandatory for the declaration ECS Netherlands. In the GM01 message only one booking number can be transmitted, which will be allocated to all containers. If different booking numbers are to be allocated to the transmitted containers, format DY01/HDS is to be chosen.

The data of the presentation notification that is not needed for the declaration at the Dutch customs, may be transmitted in the message, but will not be stored at DAKOSY.

2 DAKOSY-Frame while sending and receiving data

The actual EDIFACT-message resp. presentation notification must additionally be „packed“ with what is known as DAKOSY-frame.

This is mandatory in order that the presentation notification can be processed in the DAKOSY-system.

Particular records of the DAKOSY frame are explained below.

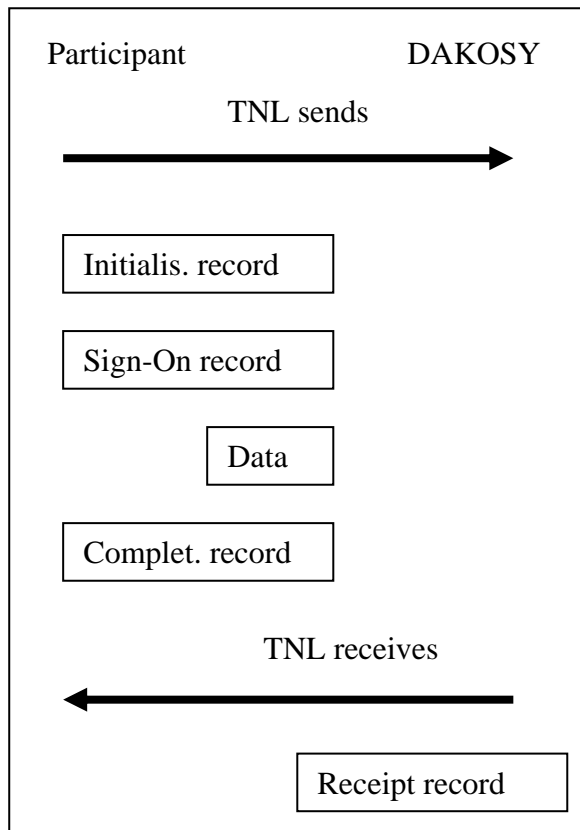


Figure A: Session structure while sending data to DAKOSY

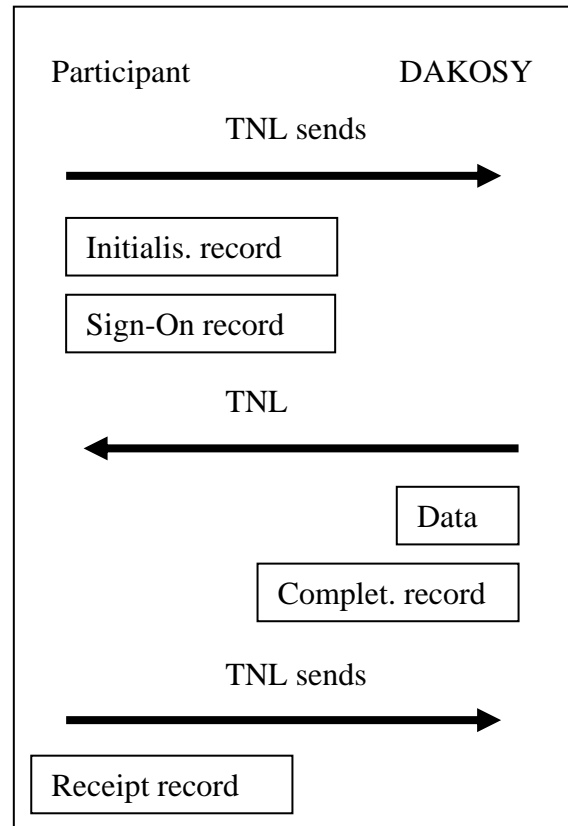


Figure B: Session structure while receiving data from DAKOSY

2.1 The initialisation record

A transmission sequence (session) does always start with an initialisation record, which signifies the sign-in for the communication with DAKOSY. The participant must send the 80-digit record set with the constant „DAKO“ at position 1 to 4.

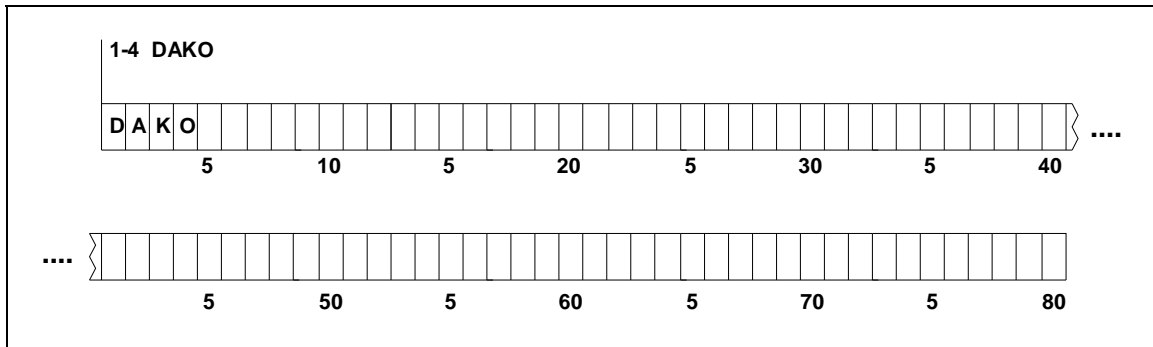


Figure 1

- Digits01 - 04 DAKO
- Digits05 - 80 blank / space (hex. 40)

2.2 The Sign-On record

The SIGN-ON-record is always the second 80-digit record set in a transmission sequence (session). It contains specifications about the required transaction type (GM01), the direction of traffic (sending or receiving) and the participant identification. Please look at the **DAKOSY**-code key to get the meaning of individual keys.

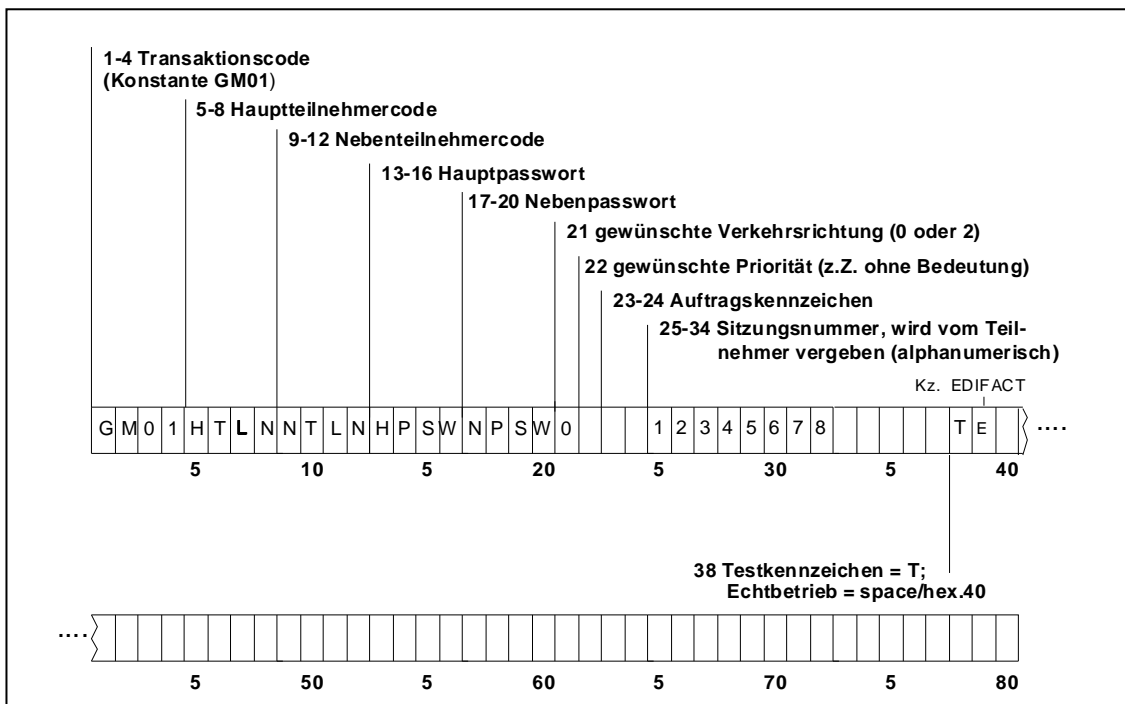


Figure 2

- Digit 01 – 04 Transaction code (constant GM01)
- Digit 05 – 20 Participant identification
- Digit 05 - 08 Main participant- Code
- Digit 09 - 12 Sub participant- Code
- Digit 13 - 16 Main keyword
- Digit 17 - 20 Sub keyword
- Digit 21 - 21 required traffic direction (0 or 2)
- Digit 22 - 22 required priority (irrelevant at present)
- Digit 23 - 24 Code of order
- Digit 25 - 34 Session no., assigned by participant (alphanumeric)
- Digit 35 - 37 free
- Digit 38 - 38 Test code (Test. = T, real operation= space / hex. 40)
- Digit 39 - 39 Ind. EDIFACT = „E“
- Digit 40 - 80 free

2.3 The completion record

A transmission sequence has to be completed with a completion record which causes a logical interruption of the connection.

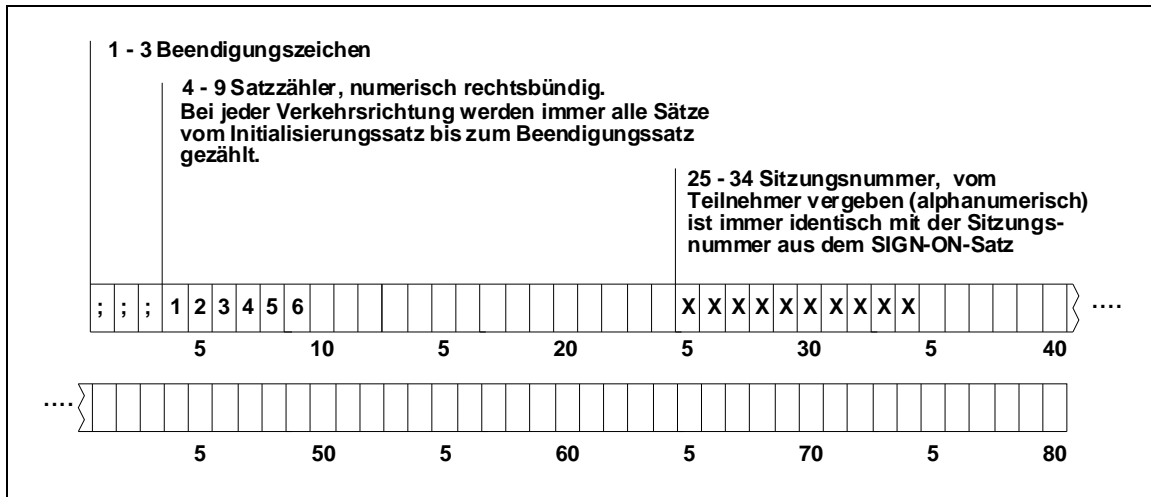


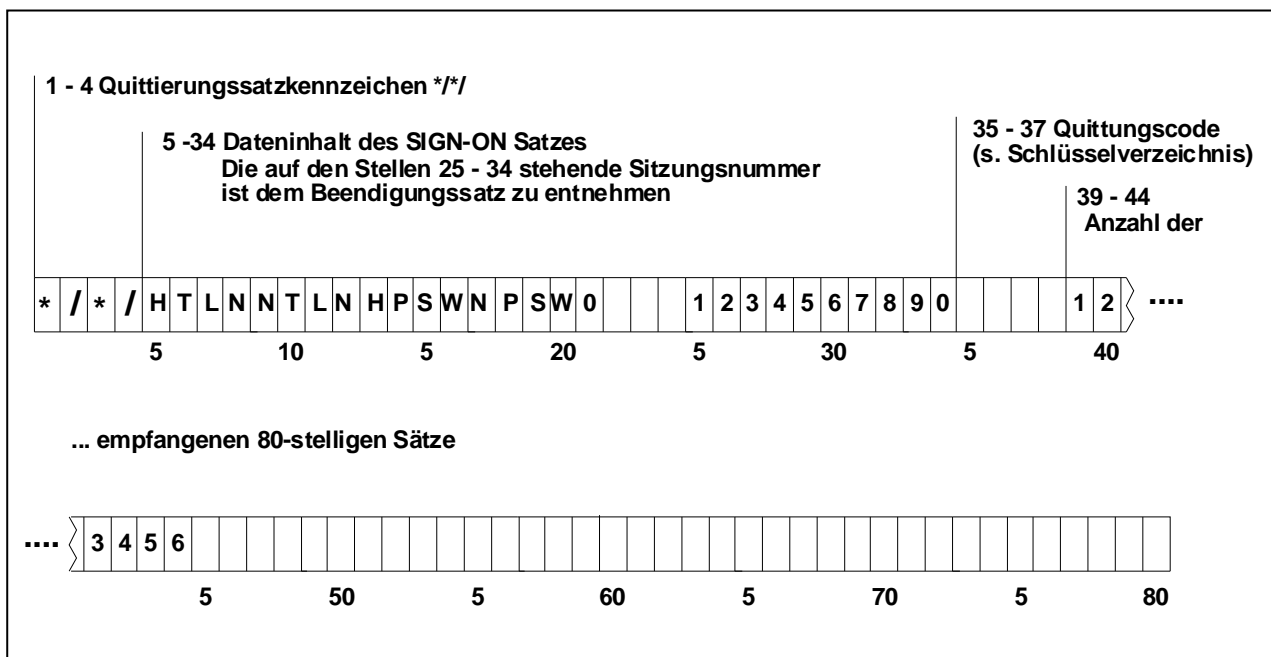
Abbildung 3

- Digit 01 - 03 Completion mark (constant ;;;)
- Digit 04 - 09 Record counter, numeric right-aligned as number of corporal transferred 80-digit records. All records (from initialisation- to the completion record) are numbered at each traffic direction
- Digit 10 - 24 Blank space
- Digit 25 - 34 Session no., assigned by participant.
The session no. (when sending or receiving data) is always identical with the session no. of the sign-on-record.

It must be guaranteed, that (in the whole transmission sequence) the completion constant „;;;“ in the record set in place 1 to 3 solely appears in the completion record.

2.4 The receipt record

A sending sequence will always be acknowledged by the respective participant with the receipt record. The receipt record without receipt code (initial state: "blank/Space" (hex 40)) will acknowledge the proper takeover of data, resp. the storage in the receiving system to the sending participant. The receipt code will be sent, if an error has been recognized during transaction (e.g. error code 001 = initialisation record incorrect or not sent). It contains:



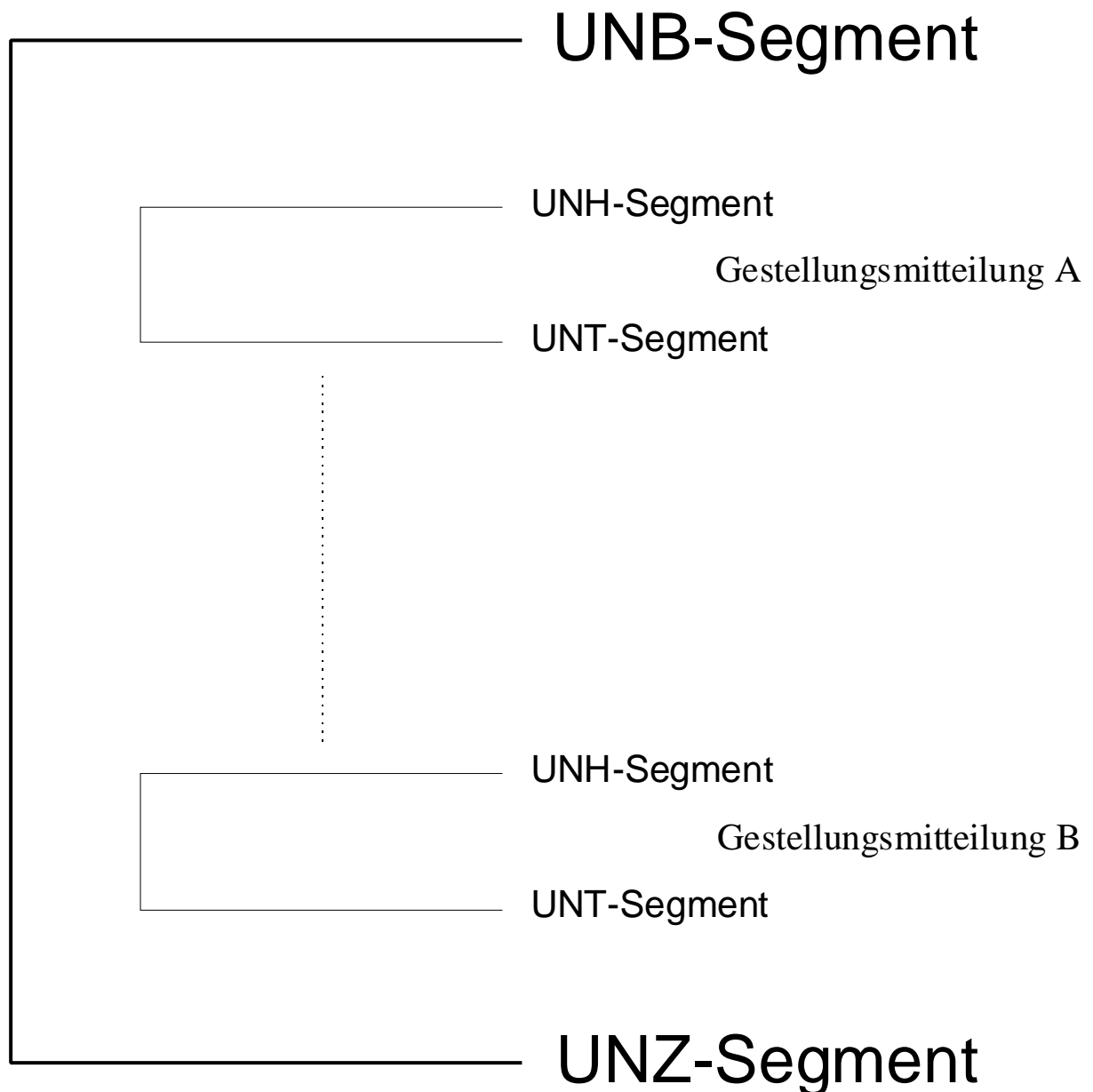
- Digit 01 - 04 Indicator receipt record */*/
- Digit 05 - 34 Data content of SIGN-ON-record.
The session number stated on positions 25-34 must be taken from the completion record.
- Digit 35 - 37 Receipt code (see code key)
- Digit 38 - 38 Test indicator
(Test mode = T, real operation = Space/blank hex. 40)
- Digit 39 - 44 Number of corporal received 80-digit records

During recalling the DAKOSY data the participant immediately obtains an receipt record with the corresponding receipt code, in lieu of data, if DAKOSY already noticed an error in the initialisation or sign-on record (e. g.: wrong keyword or wrong traffic direction).

3 Service segments

3.1 Formatting rules for the data transfer

The universal form of interchange looks as follows:



The physical interchange is limited by the segments UNB and UNZ.

3.2 Explanations to the message structure

The following schedule only contains used segments and segment groups.

Ser. no	Tag	Stat.	Occ.	Contents
01	UNB	R	1	Interchange header segment
02	UNH	R	1	Message header segment
03	BGM	R	1	Beginning of message
04	DTM	R	1	Date of transmission
05	RFF	R	1	Participant code of issuer at Portbase/ECS NL
	SG1	R	1	NAD
06	NAD	R	1	Name and address participant (sender of data)
	SG3	R	1	TDT-LOC-DTM
07	TDT	R	1	Voyage number (agent), DAKOSY-vessel departure no., call sign (vessel), name of the vessel.
8	LOC	R	99	Port of loading
11	DTM	C	1	Vessel date of departure
12	GIS	C	1	Indicator direct takeover
	SG6	R	1	CNI-SG7
13	CNI	R	1	Transfer data
	SG7	R	1	RFF-GIS-SG8-SG10-SG13
14	RFF	R	1	Number of export declaration MRN
15	GIS	C	9	General indicator
	SG8	C	1	TDT-LOC
16	TDT	C	1	Voyage no (agent), call sign(vessel), name of the vessel
17	LOC	C	1	Port of discharge code and port of discharge
	SG10	C	3	NAD-RFF-SG11
18	NAD	R	1	Shipping company/ line agent
19	RFF	R	1	Reference of the presenter/forwarder/ and booking number
	SG11	R	1	CTA-COM
20	CTA	R	1	Official in charge
21	COM	R	2	Communication contact
	SG13	R	999	GID-FTX-MEA-SGP-PCI
22	GID	R	1	Kolli no and package type, code and type of package (long)
23	FTX	C	99	Position numbers/ Pack-ID's to number of export declaration (MRN), SACO - Z-number /B-numbers, description of goods, special explanatory notes
24	MEA	R	2	Gross weight/ net weight
25	SGP	R	1	Equipment allocation of goods to container no
26	PCI	C	1	Characters and numbers (marks)
27	UNT	R	1	Message trailer
28	UNZ	R	1	Interchange – final segment

3.3 Specific content of segments (only contents used for customs declaration ECS Netherlands are listed)

Description	Segment and clear path
Port of loading	10 LOC SG3
Date of transmission	4 DTM
Gross weight/ net weight	24 MEA SG6\SG7\SG13
Equipment allocation of goods to container number	25 SGP SG6\SG7\SG13
Number of kolli and type of packages, code and type of package (long)	22 GID SG6\SG7\SG13
Name and address ZAPP-participant (data sender)	8 NAD SG1
Number of export declaration MRN	14 RFF SG6\SG7
Reference of presentor/ forwarder	19 RFF SG6\SG7\SG10
Voyage number (agent), DAKOSY-vessel departure no, call sign (vessel), name of vessel.	9 TDT SG3
Voyage number (agent), call sign (vessel), name of vessel	16 TDT SG6\SG7\SG8
Official in charge	20 CTA SG6\SG7\SG10\SG11
Vessel date of departure	11 DTM SG3
Participant code of issuer PortBase/ECS NL	6 RFF
Booking number	19 RFF SG6\SG7\SG10

3.4 UNA separator default

The UNA separator default must be placed in front of the UNB header segment of the interchange.

:	Separates data elements in a group
+	Separates data elements, segment identifier
.	Decimal point; to come up to standard you can use both point and comma as decimal point. Decimal points must not be used compositely.
?	Enabling signal; restores the primary meaning of the character that follows the interrogation mark
Leerzeichen	(blank/ space) Reserved for subsequent applications
'	Segment-final character (apostrophe), Hex-value 7 D

3.5 Status and application signs

The status indicator are stated in the column „segment structure“ of the proximate table, meaning:

M = Mandatory field

C = Optional field

The application signs in the column „St“ of the table have the meaning:

R (Required)

Segments, data element groups or data elements, which are marked by this must be sent due to the EDIFACT-demand („mandatory fields“) or from applications view.

D (Depending)

Data units have to be sent in case of special conditions, which are either described in the column „Verwendung/Hinweise“ („usage/ hints“) or can be gathered out of application. The segment group 32 (dangerous goods identification) e.g. has the status „D“, because the usage depends on whether it is about dangerous goods at this position /item.

O (Optional)

It's up to the message sender to transmit data units. Sender and receiver may agree to an individual arrangement in case of doubt.

X (not used) This data is not being used.

3.6 UNB Interchange-header segment

Segment: **UNB** Ser. no.: 1 Level: 0 **Interchange header segment**
Status: R Max.occ.: 1

Description: Interchange header segment

Formal description of segment :

EDIFACT			Application	
	Description	St Format	St	Usage/hints
S001	Syntax-identifier	M	R	
0001	Syntax-label	M a4	R	UNOA = UN/ECE character set A = capitals UNOB = UN/ECE character set B = caps and lower case letters
0002	Syntax version no.	M n1	R	1 = old version 2 = new version
S002	Sender of transmission data	M	R	
0004	Name of sender	M an..35	R	
0007	Participant code, qualifier	C an..4	O	
0008	Return address		X	Return address
S003	Receiver of transmitted data	M	R	
0010	Name of the receiver	M an..35	R	POBA
0007	Participant's code, qualifier	C an..4	O	
0014	Forwarding address		X	
S004	Date/ time of creation	M	R	
0017	Date of creation	M n6	R	Format YYMMDD
0019	Time of creation	M n4	R	Format HHMM
0020	Reference of data exchange.	M an..14	R	Please choose a unique, ascending number as reference!
S005	Reference/keyword of receiver	C	D	
0022	Reference or keyword of receiver	M an..14	R	Referenz or key word of the receiver
0025	Reference or keyword of receiver, qualifier		X	Not used
0026	Reference of application		X	Not used
0029	Processing priority, code		X	Not used
0031	Acknowledgement request		X	Not used
0032	Exchange agreement-code		X	Not used
0035	Test-indicator	C n1	D	1 = interchange is a test

Comment:

Example:

UNB+UNOA:1+DAK::X+POBA::X+040421:1513+0404211513+:AA+++++1

3.7 UNH Message – header segment

Segment: **UNH** Ser no.: 2 level: 0 **Message header segment**
 Status: R Max.occ.: 1

Description: Message header segment

Formal description of the segment:

EDIFACT			Application	
	Description	St Format	St	Usage/hints
0062	Message reference number	M an..14	R	Message reference number
S009	Message code	M	R	
0065	Message type identifier	M an..6	R	CUSCAR = Customs-cargo report message
0052	Version number of message type	M an..3	R	D = Version number
0054	Release number of message type	M an..3	R	96A = Release Nummer
0051	Controlling agency, coded	M an..2	R	UN = UN/ECE/TRADE/WP.4, United Nations Standard Messages (UNSM)
0057	User manual version no. of responsible agency	C an..6	R	NLGM01 = Application code

Comment:

Example:

UNH+04042115130001+CUSCAR:D:96A:UN:NLGM01'

3.8 UNT Message trailer

Segment: UNT Ser.no: 27 Level: 0 **Message trailer**
 Status: R Max. Occ.: 1

Description: Message trailer

Formal description of the segment:

EDIFACT			Application	
	Description	St Format	St	Usage/hints
0074	Number of message segments	M n..6	R	Number of segments (including the UNH- and UNT- segment.) Message reference number out of the UNH/0062. Comparison of numbers when receiving the message with the UNH record.
0062	Message reference number	M an..14	R	

Comment:

Example:

UNT+96+04042115130001'

3.9 UNZ Interchange trailer

Segment: **UNZ** Ser.no: 28 Level: 0 **Interchange trailer**
Status: R Max. Occ.: 1

Description: Interchange trailer

Formal description of the segment:

EDIFACT			Application	
	Description	St Format	St	Usage/hints
0036	Interchanger control count	M n..6	R	Number of messages in the interchange
0020	Interchange control reference	M an..14	R	Message-reference number out of the UNB/0020

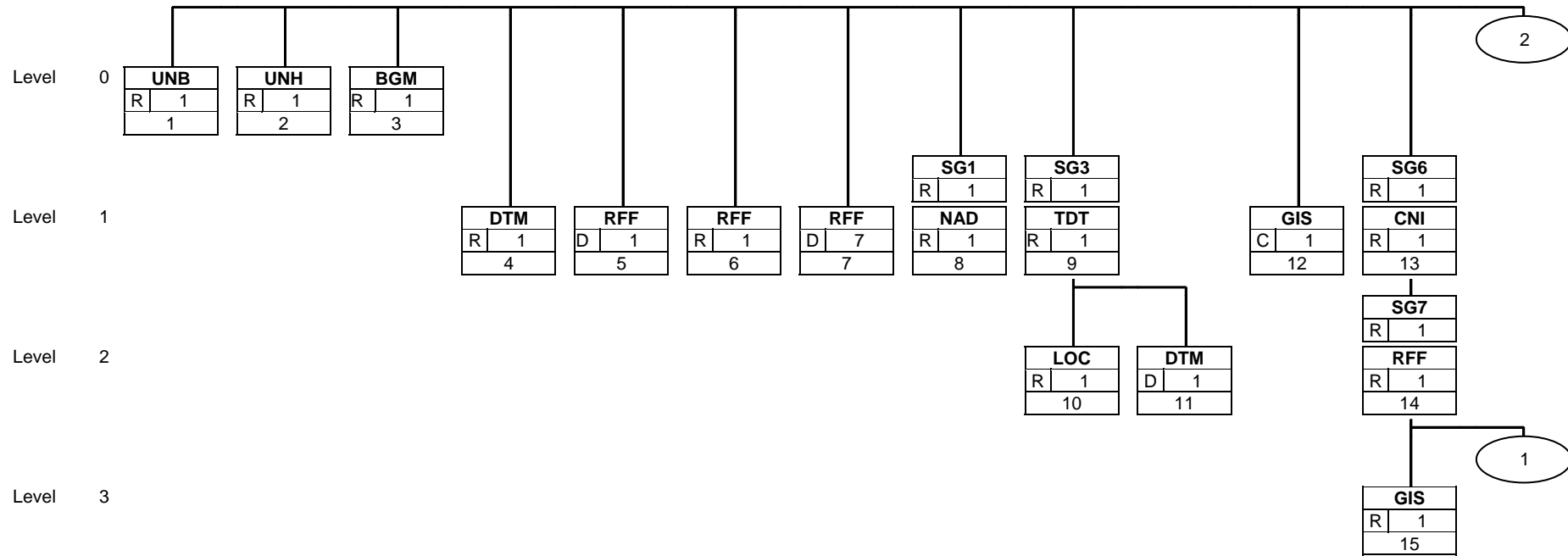
Comment:

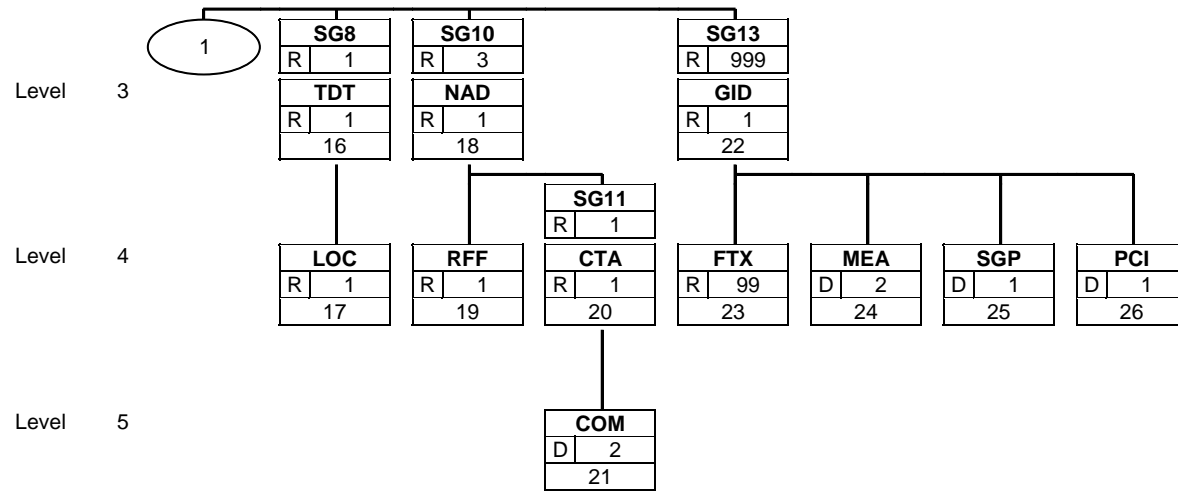
Example:

UNZ+1+0404211513'

4 Message structure

The specification of the CUSCAR – message corresponds with the presentation notification GM01. The used segments are marked.





5 GM01 AES specifics

Segment: **BGM** Ser.no: 3 Level: 0 Beginning of message
 Status: R Max. Occ.: 1
 Variant no: 1

Description: Beginning of message

EDIFACT			Application		
	Description	St Format	St	Example	Usage/hints
C002	Document-/message name	C	R		
1001	Document-/message name, coded	C an..3	R	+335	335 = booking request for transport capacity
1131	Code list qualifier		X	:	Not used
3055	Code list responsible agency, coded		X	:	Not used
1000	Document-/message name	C an..35	D	:GM01V03	Version of GM01 GM01V04 = Version 04
1004	Document-/message number	C an..35	R	+	UNIQUE
1225	Message function, coded	C an..3	R	+9'	9 = Original 1 = Cancellation

Comment:

9 = original: the reference, sent in segment 40 RFF, for the forwarder, specified in the NAD, must not be allocated to a ZAPP-reference when creating a file and may not be used again after cancellation.

1 = cancellation: the complete presentation notification, resp. CUSCAR, that shall be deleted, must be sent again. Thereby the reference of the segment 40 RFF has to be known at DAKOSY .

Example:

BGM+335:::GM01V04++9'

Segment:

DTM

Ser.no: 4
Status: R
Variant no: 1

Level: 1
Max. Occ.: 1

Date/time /period

Description: Date of transmission

EDIFACT			Application		
	Description	St Format	St	Example	Usage/hints
C507	Date/time/period	M	R		
2005	Date/time/period qualifier	M an..3	R	+137	137 = Document-/Message date/ time
2380	Date/time/period	C an..35	R	:	Date and time
				200404211 513	
2379	Date/time/period Format qualifier	C an..3	R	:203'	203 = YYYYMMDDHHMM

Comment:

Example:

DTM+137:200404211513:203'

Segment:

RFF

Ser.no: 5 Level: 1
 Status: R Max. Occ.: 1
 Variant no: 2

References

Description: TIN number

EDIFACT			Application		
	Description	St Format	St	Example	Usage/hints
C506	Reference	M	M		
1153	Reference qualifier	M an..3	M	+ABP	ABP =Participant code of the issuer at PortBase/ECS NL
1154	Reference number	C an..35	R	:Code	Participant code

Comment:

The participant code of the issuer at PortBase/ECS NL has to be indicated in this segment

Example:

RFF+ABP:TN-Code Port Base'

Group: **SG1** Status: R Max. Occ.: 1 NAD
Variant no: 1

Segment: **NAD** Ser.no: 6 Level: 1 **Name and address**
Status: R Max. Occ.: 1
Variant no: 1

Description: Name and address ZAPP participant (data sender)

EDIFACT			Application		
	Description	St Format	St	Example	Usage/hints
3035	Party, qualifier	M an..3	R	+MS	MS = Document-/Message issuer or sender
C082	Party identification	C	R		
3039	Party identification	M an..35	R	+DAK	DAKOSY-participant code

Comment:

Example:

NAD+MS+DAK

Group: **SG3** Status: R Max. Occ.: 1 TDT-LOC-DTM
Variant no: 1

Segment: **TDT** Ser.no: 7 Level: 1 **Details of transport**
Status: R Max. Occ.: 1
Variant no: 1

Description: Voyage no. (agent), DAKOSY vessel departure no., call sign (vessel), vessel name.

EDIFACT			Application		
	Description	St Format	St	Example	Usage/hints
8051	Transport stage qualifier	M an..3	R	+20	20 = Main carriage
8028	Conveyance reference number	C an..17	O	+	Voyage no. agent an8
C220	Mode of transport		X		Not used
8067	Mode of transport, coded		X	+	Not used
C228	Means of transport		X		Not used
8179	Type of means of transport, identification		X	+	Not used
C040	Carrier	C	D		
3127	Carrier, identification	C an..17	D	+XXX9999	The vessel departure number XXX9999 is always to be indicated for customs declarations at the Dutch ECS system. an7
8101	Direction of transit, coded		X	+	Not used
C401	Excess transportation, information		X		Not used
8457	Excess transportation reason, coded		X	+	Not used
C222	Transport-identification	C	D		
8213	Identification of means of transport, identification	C an..9	D	+	Call sign (vessel) an7 - see A
1131	Code list qualifier	C an..3	D	:	103 = index of call signs - see A
3055	Code list responsible agency, coded		X	:	Not used
8212	Identification means of transport	C an..35	D	:'	Name of vessel - see A

Comment:

Following alternatives are available for the identification of the vessel:

Alternative A: Specification of the DAKOSY-voyage no. (TDT, C040, DE 3127)

(Further particulars aren't required, because all information of the central DAKOSY-vessel schedule file will be added automatically)

Alternative B: Specification of the call sign (TDT, C222, DE 8213), departure no. (segment 11 DTM, DE 2380) and agent's codes (segment 38 NAD, qualifier BA, DE 3039) (An adjustment with the vessel departure file will be made and specifications will be added if applicable)

Alternative C: Specification of the vessel name (TDT, C222, DE 8212), date of departure (segment 11 DTM, DE 2380) and agent's codes (segment 38 NAD, Qualifier BA, DE 3039)

(An adjustment with the DAKOSY vessel schedule database will be made and specifications will be added if available)

Alternative D: Specification of the DAKOSY voyage no. "XXX9999" (TDT, C040, DE 3127), vessel name(C222, DE 8212), estimated date of departure(Segment 11 DTM, DE 2380) and agent's codes(Segment 38 NAD, Qualifier BA, DE 3039). The voyage no. "XXX9999" shall only be used, if the exact spelling of the vessel name , resp. the exact date of departure are unknown. (An adjustment with the DAKOSY vessel schedule database will be made and specifications will be added if available).

Validation: Different details between vessel identification from GM01 and DAKOSY vessel schedule database will cause an error - except alternative D.

Example:

TDT+20++++XXX9999+++

Group: **SG3** Status: R Max. Occ.: 1 TDT-LOC-DTM
Variant no: 1

Segment: **LOC** Ser.no: 8 Level: 2 **Location**
Status: R Max. Occ.: 1
Variant no: 1

Description: **DAKOSY terminal code**

EDIFACT			Application		
	Description	St Format	St	Example	Usage/hints
3227	Location, qualifier	M an..3	R	+9	9 = Place / port of loading 189 = if UMF DAKOSY terminal code - see B
C517	Location		X		Not used
3225	Location, identification		R	+	NLR TM or NLAMS
C519	Related location 1, identification	C	X		
3223	Related place/location 1, identification	C an..25	X	+'	DAKOSY terminal code - see A

Comment:

Example:

LOC+9+NLR TM'

Group: **SG3** Status: R Max. Occ.: 1 TDT-LOC-DTM
Variant no: 1

Segment: **DTM** Ser.no: 9 Level: 2 **Date/time /period**
Status: D Max. Occ.: 1
Variant no: 1

Description: Vessel date of departure

EDIFACT			Application		
	Description	St Format	St	Example	Usage/hints
C507	Date/time/period	M	R		
2005	Date/time/period, qualifier	M an..3	R	+133	133 = estimated date and time of departure
2380	Date/time/period	C an..35	R	:20040427	Vessel date of departure (segment 9 TDT, DE 8212) an 8 - see A
2379	Date7time/period, format qualifie	C an..3	R	:102'	102 = YYYYMMDD

Comment:

See annotation A to segment TDT 9

Example:

DTM+133:20040427:102'

Group: **SG6** Status: R Max. Occ.: 1 CNI-SG7
Variant no: 1

Segment: **CNI** Ser.no: 13 Level: 1 **Consignment data**
Status: R Max. Occ.: 1
Variant no: 1

Description: Consignment data

EDIFACT			Application		
	Description	St Format	St	Example	Usage/hints
1490	Consolidation item number	C n..4	R	+1'	Serial number 1

Comment:

Example:
CNI+1'

Group: **SG6** Status: R Max. Occ.: 1 CNI-SG7
Variant no: 1

Group: **SG7** Status: R Max. Occ.: 1 RFF-GIS-SG8-SG10-SG13
Variant no: 1

Segment: **RFF** Ser.no: 14 Level: 2 **References**
Status: R Max. Occ.: 1
Variant no: 1

Description: Number of export declaration MRN

EDIFACT			Application		
	Description	St Format	St	Example	Usage/hints
C506	Reference	M	R		
1153	Reference, qualifier	M an..3	R	+ED	ED = export declaration : MRN
1154	Reference number	C an..35	D	: 06DE9999 12345678 E1	Number of export declaration an18 MRN an18: n2; (year (00-99) a2; country ID,DE' n4 office number ATLAS n8; serial number a1; technical procedure code ,E' (a1) n1; check digit (n1)
1156	Line number	C an..6	C	:X	
4000	Reference version number	C an..35	C	:X'	

Comment:

Example:

RFF+ED:06DE999912345678E1:X:X'

Group: **SG6** Status: R Max. Occ.: 1 CNI-SG7
Variant no: 1

Group: **SG7** Status: R Max. Occ.: 1 RFF-GIS-SG8-SG10-SG13
Variant no: 1

Segment: **GIS** Ser.no: 15 Level: 3 **General indicator**
Status: R Max. Occ.: 1
Variant no: 1

Description: **General indicator**

EDIFACT			Application		
	Description	St Format	St	Example	Usage/hints
C529	Indicator of processing	M	M		
7365	Indicator of processing, coded	M an..3	M	+22	22 = Export
1131	Code list, qualifier		X	:	
3055	Code list responsible agency, coded		X	:	
7187	Process type, code	C an..17	C	:AES'	AES = export declaration in AES procedure AEM = export declaraiion in AES procedure for market regulation commodities ECS= export declaration at the Dutch customs system ECS SAC = consolidated container for export declaration in AES procedure an..5

Comment:
Declaration type

Example:
GIS+22:::ECS'

Group:	SG6	Status: R	Max. Occ.: 1	CNI-SG7
		Variant no: 1		
Group:	SG7	Status: R	Max. Occ.: 1	RFF-GIS-SG8-SG10-SG13
		Variant no: 1		
Group:	SG10	Status: R	Max. Occ.: 3	NAD-RFF-SG11
		Variant no: 1		
Segment:	NAD	Ser.no: 18	Level: 3	Name and address
		Status: R	Max. Occ.: 1	
		Variant no: 1		

Description: Carrier/ agent

EDIFACT			Application		
	Description	St Format	St	Example	Usage/hints
3035	Party, qualifier	M an..3	R	+BA	BA = booking agent CA = carrier See A
C082	Party code	C	R		
3039	Party code	M an..35	D	+SAC	The DAKOSY-code must be specified for "BA" and "CA". an 4
1131	Code list, qualifier	C an..3	O	:ZZZ'	ZZZ = mutually agreed

Comment:

A The agents/agents, resp. shipowners corresponding DAKOSY-participant-code will be indicated in DE 3039. It isn't necessary to indicate an address in such cases. Only DAKOSY-participant-codes of agents/agents or shipowners will be transferred in the DE3039 during the transmission of the CUSCAR to agents/agents or shipowners. The composit C058 won't be passed on in this case.

Example:

NAD+BA+SAC:ZZZ'

Group:	SG6	Status: R	Max. Occ.: 1	CNI-SG7
		Variant no: 1		
Group:	SG7	Status: R	Max. Occ.: 1	RFF-GIS-SG8-SG10-SG13
		Variant no: 1		
Group:	SG10	Status: R	Max. Occ.: 3	NAD-RFF-SG11
		Variant no: 1		
Segment:	RFF	Ser.no: 19	Level: 4	References
		Status: R	Max. Occ.: 1	
		Variant no: 1		

Description: Reference of the presenter/ forwarder

EDIFACT			Application		
	Description	St Format	St	Example	Usage/hints
C506	Reference	M	R		
1153	Reference, qualifier	M an..3	R	+CR	CR = reference of the presenter/ forwarder BN = booking number if in SG10, NAD, DE 3035 qualifier BA indicated, mandatory field for the customs declaration at the Dutch customs system ECS
1154	Reference number	C an..35	R	: MLA40106 2'	Reference of the presenter/ forwarder Booking number an..16

Comment:

Only one booking number allocated to all containers, is being transmitted in the presentation notification. Format DY01/HDS is to be used, if more than one booking number shall be transmitted with the presenter's reference/ MRN,

Example:

RFF+CR:MLA401062'

Group:	SG6	Status: R	Max. Occ.: 1	CNI-SG7
		Variant no: 1		
Group:	SG7	Status: R	Max. Occ.: 1	RFF-GIS-SG8-SG10-SG13
		Variant no: 1		
Group:	SG10	Status: R	Max. Occ.: 3	NAD-RFF-SG11
		Variant no: 1		
Group:	SG11	Status: R	Max. Occ.: 1	CTA-COM
		Variant no: 1		
Segment:	CTA	Ser.no: 20	Level: 4	Contact
		Status: R	Max. Occ.: 1	
		Variant no: 1		

Description: Official in charge

EDIFACT			Application		
	Description	St Format	St	Example	Usage/hints
3139	Function of official in charge, coded	C an..3	R	+IC	IC = Information contact
C056	Department or processor	C	R		
3413	Department or processor, code		X	+	Not used
3412	Department or processor	C an..35	R	:ROLF WOLF'	Official in charge

Comment:

Example:

CTA+IC+:ROLF WOLF'

Group: **SG6** Status: R Max. Occ.: 1 CNI-SG7
Variant no: 1

Group: **SG7** Status: R Max. Occ.: 1 RFF-GIS-SG8-SG10-SG13
Variant no: 1

Group: **SG10** Status: R Max. Occ.: 3 NAD-RFF-SG11
Variant no: 1

Group: **SG11** Status: R Max. Occ.: 1 CTA-COM
Variant no: 1

Segment: **COM** Ser.no: 21 Level: 5 **Contact of communication**
Status: D Max. Occ.: 3
Variant no: 1

Description: Contact of communication

EDIFACT			Application		
	Description	St Format	St	Example	Usage/hints
C076	Contact of communication	M	R		
3148	Communication number	M an..512	R	+0421/ 52016-23	Phone mandatory E-mail address Fax mandatory an..15 an..56 an..35
3155	Communication line/ service, qualifier	M an..3	R O R	:TE'	TE = phone mandatory EM = Email address FX = Fax mandatory

Comment:

As of the 01.09.2008 the phone- and telefax number will be mandatory fields in the presentation notification and must be exclusively indicated in the segment COM!!

Example:

COM+0421/52016-23:TE'

Group:	SG6	Status: R	Max. Occ.: 1	CNI-SG7
		Variant no: 1		
Group:	SG7	Status: R	Max. Occ.: 1	RFF-GIS-SG8-SG10-SG13
		Variant no: 1		
Group:	SG13	Status: R	Max. Occ.: 999	GID-FTX-MEA-SGP-PCI
		Variant no: 1		
Segment:	GID	Ser.no: 22	Level: 3	Details of consignment position
		Status: R	Max. Occ.: 1	
		Variant no: 1		

Description: Number and type of packages, code and type of packages (long)

EDIFACT			Application		
	Description	St Format	St	Example	Usage/hints
1496	Consignment position	C n..5	R	+1	1, 2, 3, etc.
C213	Number and type of packages	C	R		
7224	Number of packages	C n..8	R	+1	Number of packages -see A an..6
7065	Type of packages code	C an..17	R	:KL	KL = Kolli (packages) Type of package; DAKOSY code an 2 -see A
1131	Code list, qualifier		X	:	Not used
3055	Code list responsible agency, coded		X	:	Not used
7064	Type of package	C an..35	D	:KOLLI'	Type of package; mandatory field, if no coding indicated an..7

Comment:

A The declaration types ,SAC" = SACO –presentation and ,UMF" = message of repositioning (SG07 GIS, DE 7187), merely approve the indication of number 1 in data element DE 7224 and the indication of one container package code in data element DE 7065.

The container package codes are published in the internet.

Example:

GID+1+1:KL::KOLLI'

Group:	SG6	Status: R	Max. Occ.: 1	CNI-SG7
		Variant no: 1		
Group:	SG7	Status: R	Max. Occ.: 1	RFF-GIS-SG8-SG10-SG13
		Variant no: 1		
Group:	SG13	Status: R	Max. Occ.: 999	GID-FTX-MEA-SGP-PCI
		Variant no: 1		
Segment:	FTX	Ser.no: 23	Level: 4	Free text
		Status: R	Max. Occ.: 99	
		Variant no: 1		

Description: Position numbers/ Pack-ID's to the number of export declaration (MRN), SACO - Z-number/B-number, description of goods, special explanatory note

EDIFACT			Application		
	Description	St Format	St	Example	Usage/hints
4451	Text classification, coded	M an..3	D	+AAA	AAA = goods description -see A MKS = position number / Pack-ID/ Indicator of completeness/ Indicator of shortage to MRN -see A and B AAZ = (Additional export information, special notes) -see A OSI = (Otherwise specified) = SACO Not applicable as of the 01.03.2008 DCL = declaration SACO with indicator of completeness - see D AKG = Chassis no.
4453	Text processing hint, coded		X	+	Not used
C107	Text reference		X		Not used
4441	Free text, coded		X	+	Not used
C108	Text	C	D		
4440	Free text	M an..70	R	+001	Position number(MKS) n3 May be 000 if a MRN with this message is completely declared (indic. of completeness= J) Goods description; (AAA); an 44; Status = R Spezial expl.; (AAZ) an 45, Status = R Z-number/B-number + indicator of completeness (J/N) an13 Chassis no. an..17 see F
4440	Free text	C an..70	O	:01	Package-ID to the position number (MKS) n2 must be 00, if the position number= 000; in case of 00 there won't be expected further package-ID data to the position, the message will be rejected. Goods description; an 44 Special explan.; an 45 Z-number/B-number + indic. of completeness (J/N) an13
4440	Free text	C an..70	O	:J	Indic. of completeness J an1 see A Goods description; an 44 Special explan.; an 45
4440	Free text	C an..70	O	:	Indic. shortage in quantity J/ seeA Goods description; an 44 Special explan.; an 45 Z-number /B-number + indic. of completeness (J/N) an13
4440	Free text	C an..70	O	:'	Goods description; an 44 Special explan.; an 45 Z-number/B-number; an 12 Z-number/B-number + indic. of completeness (J/N) an13

Comment:

A

FTX+AAA / FTX+MKS / FTX+AAZ:

Not applicable at this declaration type ,SAC" = SACO

B

FTX+MKS

The indicator of completeness must always be set on „J“, splitting of a MRN in 2 or more Z-numbers is only available with the HDS.

The indicator of shortage in quantity = J must always be indicated if the quantity (weight), which is indicated to the position, has been decreased in comparison to the quantity indicated in the first stage of customs declaration. The shortage in quantity will be reported to AES by means of the variation in net weight. The actual export weight of the position must be notified in positions declared with shortage in quantity = J.

A position must be separately specified in the segment RFF qualifier EP at the header level, if the position will be cancelled completely. If the whole MRN won't be exported, it must be cancelled by the exporter (goods aren't arrived at port yet) or the GPO shortage in quantity message termination of export (goods are already at the port) has to be sent.

The MRN positions in FTX+MKS have to be indicated in ascending order.

Example:

GID+1+1:UV:::'

FTX+MKS+++001:00:J:'

...

GID+2+1:UV:::'

FTX+MKS+++001:00:J:'

...

GID+3+1:UV:::'

FTX+MKS+++002:00:J:'

...

GID+4+1:UV:::'

FTX+MKS+++002:00:J:'

...

GID+5+1:UV:::'

FTX+MKS+++003:00:J:'

...

C+D

FTX+OSI / FTX+DCL

The declaration of a consolidated container may be achieved via FTX+OSI or FTX+DCL.

For the receiver applies:

Nothing has changed at the original format. The SACO-ZAPP-references will be transferred in the FTX+OSI as always.

C

FTX+OSI: not applicable for collectors as of 01.03.2008

D

FTX+DCL: mandatory for collectors as of 01.03.2008

The Z-number(s)/B-number(s), which will be converted into a SACO Z-number that carries the status not released, must be indicated by identifying the qualifier ,DCL" (declaration type "SAC" seg. SG07 GIS, DE 7187).

The package number in the SG13 GID must be indicated with value 1, by using a of a container package code.

The transmission of the container number in the SG13 SGP will become mandatory.

Even the SACO Z-number obtains the status stop, if a loading-stop, resp. an examination (of the MRN) will be ordered for the B-number (contained in this SACO Z-number). The SACO-Z-number will obtain the status released (RLS) if all containing Z-numbers are released and the recently contained B-number has been generated at least 2 hours ago and none of the B-numbers carry the status "stop".

The presentation notification will be rejected if a containing B-number is being stopped or an examination has been ordered by the time of the SACO-presentation.

A SACO-declaration, only containing Z-numbers, also obtains a Z-number; a B- and Z-number SACO obtains a Z-

number. A SACO AES declaration will be rejected in case of a containing Z- number, without the permission for exportation. The declaration of a SACO, only containing B-numbers, is still sent via the GM01 version 2. The indicator of completion = ,N' indicates that it is about partial shipments in the AES-process. The final SACO declaration obtains the indicator „Vollständig = J"/ complete = yes, if the MRN will be loaded in stages (= various collectors). All previous SACO-declarations obtain the indicator „Vollständig = N"/complete = no, in order to avoid that the process via AES won't be set upon „Ausgang abgeschlossen"/exportation completed ahead of time.

E

Only the position number of the exportation declaration (4451 = MKS) will be passed on in the first data element 4440 during the transmission of the CUSCAR to the shipowner/agent/line.

The goods description may add up to 4x44 positions. Special explanatory notes may add up to max. 5 x 45positions.

- Die Warenbeschreibung kann max. 4 x 44 Stellen betragen. Die besonderen Vermerke können max. 5 x 45 Stellen betragen. -

F

Pro GID kann eine Chassisnummer gesendet werden.

Group:	SG6	Status: R	Max. Occ.: 1	CNI-SG7
		Variant no: 1		
Group:	SG7	Status: R	Max. Occ.: 1	RFF-GIS-SG8-SG10-SG13
		Variant no: 1		
Group:	SG13	Status: R	Max. Occ.: 999	GID-FTX-MEA-SGP-PCI
		Variant no: 1		
Segment:	MEA	Ser.no: 24	Level: 4	Measurements
		Status: D	Max. Occ.: 2	
		Variant no: 1		

Description: Net weight/ gross weight

EDIFACT			Application		
	Description	St Format	St	Example	Usage/hints
6311	Measurements, application qualifier	M an..3	R	+AAE	AAE = values AAE = values
C502	Measurement details	C	R		
6313	Measurement, dimension, coded	C an..3	R	+G	G = Gross weight AAL = Net weight AAW = Coubage -siehe A; C
C174	Value/range	C	R		
6411	Measure unit, qualifier	M an..3	R	+KGM	KGM = Kilogramm KGM = Kilogramm
6314	Measurement value	C n..18	R	:205,000'	Value -see B Value n..11

Comment:

A At least the gross weight must be indicated.

- AAL = Net weight (without packing)
- G = Gross weight (net weight + packing)

B The weight (gross- or net weight) will be transferred in the data element 6314. Thereby attention should be paid to the fact, that the weight may have max. 8 pre-decimal places and 3 decimal places. When indicating decimal places, please indicate a comma (e.g. 5,645). The message will be rejected, in case of a transmission with more than 8 pre-decimal places. The indication will be cut off from the fourth digit, when indicating more than 3 decimal places.

Integral values can be transmitted without indicating a comma (e.g. 25000 or 25000,000). The indication of the gross weights is mandatory in case of declaration type "SAC"= SACO-presentation.

An indication of the weight won't be expected for the transmission of additional packages to one position.

C The indication of the net weight is mandatory in case of a notification of shortage in quantity. The actual weight (both gross weight and net weight, that are being up to be exported) of the position must be indicated. The indication of 0 is not permitted. The indication of the whole position takes place in segment RFF qualifier EP at the header level; if the whole MRN won't be exported, it must be cancelled by the exporter (goods aren't arrived at port yet) or the GPO shortage in quantity message termination of export (goods are already at the port) has to be sent.

Example:

MEA+AAE+G+KGM:205,000'

Group:	SG6	Status: R	Max. Occ.: 1	CNI-SG7
		Variant no: 1		
Group:	SG7	Status: R	Max. Occ.: 1	RFF-GIS-SG8-SG10-SG13
		Variant no: 1		
Group:	SG13	Status: R	Max. Occ.: 999	GID-FTX-MEA-SGP-PCI
		Variant no: 1		
Segment:	SGP	Ser.no: 25	Level: 4	Split goods place
		Status: D	Max. Occ.: 1	
		Variant no: 1		

Description: Allocation of goods to container numbers

EDIFACT			Application		
	Description	St Format	St	Example	Usage/hints
C237	Equipment identification	M	R		
8260	Equipment identification number	C an..17	R	+X	Container number in terms of PPPNNNNNNZ P = Prefix N = Number Z = Check digit an..12 -seeA
1131	Code list, qualifier		X	:	Not used
3055	Code list responsible agency, coded	C an..3	R	:'	5 = ISO (International Organization for Standardization) ZZZ = Mutually agreed (shippers owned) Code = 5 --> ISO Code = ZZZ --> shippers owned

Comment:

Mandatory in case of containerized goods, declaration type:

"SAC"= SACO-presentation.

A The prefix will always be counter-checked with the BIC-code-table, if a container number is indicated. This table contains every officially assigned container prefix.

The assignment is made by the organisation "Bureau International des Containers" (BIC). A validity check will be made in any case of an occurring prefix in this table, even if the container has been identified as "shippers owned". That's why containers without official prefix according to BIC-code must be identified as "shippers owned".

A detailed listing of the validity check is found under annex A.

An indication of the weight won't be expected for the transmission of additional packages to one position.

Example:

SGP+X::'

Group:	SG6	Status: R	Max. Occ.: 1	CNI-SG7
		Variant no: 1		
Group:	SG7	Status: R	Max. Occ.: 1	RFF-GIS-SG8-SG10-SG13
		Variant no: 1		
Group:	SG13	Status: R	Max. Occ.: 999	GID-FTX-MEA-SGP-PCI
		Variant no: 1		
Segment:	PCI	Ser.no: 26	Level: 4	Package identification
		Status: D	Max. Occ.: 1	
		Variant no: 1		

Description: Characters and numbers (marks)

EDIFACT			Application		
	Description	St Format	St	Example	Usage/hints
4233	Marking sign, coded	C an..3	R	+24	24 = Shipper assigned (marks)
C210	Marks and labels	C	R		
7102	Shipping marks	M an..35	R	+DDDDDD DD'	Character and number (marks) an 20

Comment:

Marks may be sent for the transmission of additional packages to one position.

Example:

PCI+24+DDDDDDDD'

Segment:

UNT

Ser.no: 26

Level: 0

Message trailer

Status: R

Max. Occ.: 1

Variant no: 1

Description: Message trailer

EDIFACT			Application		
	Description	St Format	St	Example	Usage/hints
0074	Number of segments in a message	M n..6	R	+96	Number of segments in a message (including the UNH- and UNT- segment)
0062	Message reference number	M an..14	R	+04042115 130001'	Message reference number of the UNH/0062.Comparison of the number when receiving the message with the UNH record.

Comment:

Example:

UNT+96+04042115130001'

Segment:

UNZ

Ser.no: 27
Status: R
Variant no: 1

Level: 0
Max. Occ.: 1

Interchange final segment

Description: Interchange final segment

EDIFACT			Application		
	Description	St Format	St	Example	Usage/hints
0036	Interchange control count	M n..6	R	+1	Number of messages in the interchange
0020	Interchange control reference	M an..14	R	+04042115 13'	Message reference number of the UNB/0020

Comment:

Example:

UNZ+1+0404211513'

6 Assignment of AES GM01 fields to the EDIFACT segments (Marking of mandatory fields for ECS Netherlands)

Field names of GM 01	S	Length (GM01 AES)	Segment-Group/ Ser.no/ -Name
Date of departure	M/K	n..8	SG 3/ 09 / DTM
Declaration type	M/K	an..3	SG7 / 18 / GIS
Package type, code	M/K	an..2	SG13 / 18 / GID
Package type, long	M/K	an..7	SG13 / 18 / GID
Booking number	M	an..16	SG10 / 15 / RFF
Special notes	K	an..225	SG13 / 21 / FTX
Container number	M/K	an..12	SG13 / 21 / SGP
DAKOSY vessel departure number	M/K	an..7	SG3 / 07 / TDT
Date of transmission	M	n..8	--- / 4 / DTM
Grossweight	M	n..11,3	SG13 / 20 / MEA
Number of packages	M	n..6	SG13 / 18 / GID
Complete shortage of a position to a MRN	D	an1	-- / 7 / RFF
Port of discharge, code	K	an..6	SG8 / 13 / LOC
Port of discharge, name	K	an..19	SG8 / 13 / LOC
Shortage in quantity	M	an1	SG13 / 19 / FTX
Net weight	D	n..11,3	SG13 / 20 / MEA
Number of the MRN	M	An18	SG13 / 11 / RFF
Position number to MRN	D	n3	SG13 / 19 / FTX/4440-1
Pack-ID to MRN	D	n2	SG13 / 19 / FTX/4440-2
Carrier / agent	M	an..4	SG10 / 14 / NAD
Reference of the forwarder	K	an..16	SG10 / 15 / RFF
Voyage number (agent)	M	an..8	SG3 / 07 / TDT

Field names of GM 01	S	Length (GM01 AES)	Segment-Group/ Ser.no/ -Name
Call sign (vessel)	M/K	an..7	SG3 / 07 / TDT
Official in charge			SG11 / 16 + 17 / CTA + COM
Phone	M	an..15	
Fax	M	an..15	
SACO ZAPP reference (B-/Z-number) indicator of completeness to ZAPP reference	D	an12 an..1	SG13 / 19 / FTX
Name of vessel	M/K	an..23	SG3 / 07 / TDT
Terminal	M	an..4	SG3 / 08 / LOC
Port of loading			
Participant Identification number TIN/ Participant code of issuer /drawer at PortBase/ECS NL	M	N7	SG00 / 06 / RFF
Indicator of completeness to MRN	M	an1	SG13 / 19 / FTX
Description of goods	M	an..176	SG13 / 21 / FTX
ZAPP participant	M	an..4	SG1 / 06 / NAD
Characters and numbers	M	an..19	SG13 / 22 / PCI

7 Examples

7.1 Examples of a presentation notification for ECS Netherlands

One vehicle on position AE

UNB+UNOA:2+DAK+POBA+080801:1429+5083'
UNH+0203160+CUSCAR:D:96A:UN:NLGM01'
BGM+335:::GM01V04++9'
DTM+137:200808011429:203'
RFF+ABP:Participant code of issuer/drawer at PortBase/ECS NL '
NAD+MS+DAK'
TDT+20+TEST+++XXX9999'
LOC+9+NLRTM'
DTM+133:20080802:102'
CNI+0001'
RFF+ED:08DE955600000101E0'
GIS+22:::ECS'
TDT+20++1'
LOC+11+BJCOO'
NAD+BA+ABS'
RFF+BN:ABS123456'
NAD+CA+ABR'
RFF+CR:A0203160'
CTA+IC+:TEST'
COM+37003410:TE'
COM+37003420:FX'
GID+00001+1:UV'
FTX+AAA+++GEBRAUCHTES INHALT'
FTX+MKS+++000:00:J'
MEA+AAE+G+KGM:00000001200'
SGP+ABSU1234567
UNT+000025+0203160'

8 Appendix

A Checking of container numbers

1. ISO container

1.1 Description

An ISO-container will be recognized by means of the alpha-prefixes. Every valid ISO-alpha-prefix is stored in a container BIC code file. Even container numbers with alpha-prefixes SUDU, HLCU, HANU and MMCU are considered as ISO-container, although the reference number of these varies from ISO-standard.

1.2 Container-BIC-codes

You can find this container-BIC-codes on the DAKOSY website in the internet as Adobe-reader-file.

- Address: <http://www.dakosy.de>
- Press **Kunden-Services (customer service)**
- Press **Schlüsselverzeichnis (code key)**
- Press **BIC code container-prefix**

2. Sent container

2.1 Container without shipper's-own indicator

You have to pass validation error free (as described above under ISO-container), otherwise the message will be rejected with an error code.

2.2 Shipper's-own container

If a container, identified as shipper's own, has got an alpha-prefix that is contained in the container BIC-code file or is called SUDU, HLCU, HANU, MMCU, a checking takes place (as described above under ISO-container). 10-digit containers with the pre-fixes OWHU and APLU (even if existing in the BIC-code file) will be let out as shipper's own-container without checking. All other containers pass under shipper's own without being checked.

Exception: Container numbers with ISO-prefix, whose calculated check digits are at variance with the actual check digit of the container (e.g. due to the modification of the container no.). Those can be reported to DAKOSY. Even the container numbers may be reported via fax, in order to confirm DAKOSY about the actual correspondence between the container and the marked number.

3. Check algorithms

3.1 Structure of container numbers

```

xxxx nnnnnnnn p
!      !      !
!      !      +----- Check digit
!      !
!      +----- Serial no. (numeric part)
!
+----- Owner's code(alpha prefix)

```

3.2 Check digit calculation as per ISO

All characters (except check digits) within the container number are assigned to a value according to the table.

Owner's code				Serial number
Charact.	Value	Charact.	Value	Value = Charact.
A	10	N	25	0
B	12	O	26	1
C	13	P	27	2
D	14	Q	28	3
E	15	R	29	4
F	16	S	30	5
G	17	T	31	6
H	18	U	32	7
I	19	V	34	8
J	20	W	35	9
K	21	X	36	
L	23	Y	37	
M	24	Z	38	

Each digit is multiplied by two to the power of the digits position within the number decremented by one.

All results will be added and the sum will be divided by 11. The remainder gives the check digit, whereas the rest of 10 gives the check digit 0.

Example: Container number: GSTU4607003

Digit	Owner's code				Serial number						S U M
	1	2	3	4	5	6	7	8	9	10	
1. Container no.	G	S	T	U	4	6	0	7	0	0	
2. Charact. value	17	30	31	32	4	6	0	7	0	0	
3. Power of two	1	2	4	8	16	32	64	128	256	512	
Result (2. * 3.)	17	60	124	256	64	192	0	896	0	0	

$1609 / 11 = 146,27$ or $146 + \text{remainder } 3 \text{ <====check digit}$

3.3 Deviating check of ISO

These containers will be recognized by the prefix (code of owner) and have got a modified check digit calculation.

3.3.1 SUDU-Container

In case of containers with prefix SUDU and a serial number from 214500 to 214699, the check digit as per ISO will be calculated first and then 1 of this subtracted. The check digit calculation as per ISO applies for containers outside the serial number .

3.3.2 HLCU-Container

The valuation of the characters H, L, C and U in the lookup table (see 4.2) will be changed for containers with the prefix HLCU into:

H =	4
L =	0
C =	2
U =	9

The further calculation of the check digit is equivalent to the ISO standard.

3.3.3 HANU-Container

The valuation of the characters H, A, N and U in the lookup table (see 3.2) will be changed for containers with the prefix HANU into:

H =	4
A =	2
N =	9
U =	0

The further calculation of the check digit is equivalent to the ISO standard.

3.3.4 MMCU-Container

Container numbers with the prefix MMCU and a serial number from 200000 to 200500 will firstly be validated as per ISO standard. If the validation fails the valuation of the characters M, C and U in the lookup table (see 3.2) changes into:

M =	13
C =	3
U =	21

This circumstance derives from the fact that the MMCU-container within this serial numbers was under conversion from the special SUDU-check digit calculation to the ISO-check digit calculation. All other MMCU-container check digits with a serial number outside the range will be calculated as per ISO only.

B Structure and checking of the Movement Reference Number (MRN)

The following table describes the composition of the MRN. Following advice:
The German MRN varies from European standard in digits 5-16 (numeric!).

Table 1

Digit	Format	Length	Description	Example
1.- 2.	an	2	Year	07
3.- 4.	an	2	ISO-alpha country code	CH
5.-17.	an	13	Identified number	0000000123456
18.	an	1	Check digit	2

1.1 Calculation of the check digit ISO 6346

A numeric value will approximately be allocated to each character of the MRN. Table 2 shows the defined allocation:

Table 2

ASCII character	0	1	2	3	4	5	6	7	8	9			
Assigned digit	0	1	2	3	4	5	6	7	8	9			
ASCII character	A	B	C	D	E	F	G	H	I	J	K	L	M
Assigned digit	10	12	13	14	15	16	17	18	19	20	21	23	24
ASCII character	N	O	P	Q	R	S	T	U	V	W	X	Y	Z
Assigned digit	25	26	27	28	29	30	31	32	34	35	36	37	38

A factor will be allocated to each value of the respective MRN position, after the conversion of the MRN in numeric values. Each numeric value must be multiplied with the respective factor. Table 3 shows the respective allocation (MRN position: factor):

Table 3

MRN digit	Factor
1.	1
2.	2
3.	4
4.	8
5.	16
6.	32
7.	64
8.	128
9.	256
10.	512
11.	1024
12.	2048
13.	4096
14.	8192
15.	16834
16.	32768
17.	65536

Calculation of the factor:

The factor of the first digit receives the value 1.
All subsequent factors will be formed by the duplication of their previous factor:

Example:

Factor (9. digit) = factor (8.digit) + factor (8.digit)
 $256 = 128 + 128$

Example :

MRN: 07DE965600222604E (without check digit)

The numeric value for the 4. digit is „15“ (table 2),
the respective factor „8“ (table3):

$$15 \times 8 = 120$$

All products (17) will be summed up (table 4).

Table 4

MRN digit	MRN	Table 2	Factors	Products
1.	0	0	1	0
2.	7	7	2	14
3.	D	14	4	56
4.	E	15	8	120
5.	9	9	16	144
6.	6	6	32	192
7.	5	5	64	320
8.	6	6	128	768
9.	0	0	256	0
10.	0	0	512	0
11.	2	2	1024	2048
12.	2	2	2048	4096
13.	2	2	4096	8192
14.	6	6	8192	49152
15.	0	0	16834	0
16.	4	4	32768	131072
17.	E	15	65536	983040
Sum				1179214

The sum has to be divided by 11.

$$1179214 : 11 = 107201, 27272727$$

Finally the remaining quantity will be formed. The remaining quantity value gives the check digit (exception = value 10, see table 5).

11 x 107201 = 1179211,
the remaining quantity of 1179214 is 3 (= check digit).

Complete MRN: 07DE965600222604E3

Table 5

Rem.quan.	10	9	8	7	6	5	4	3	2	1	0
Check digit	0	9	8	7	6	5	4	3	2	1	0

1.2 Additional checking

The checking for some countries has been aggravated in the check routine for MRNs (EDIMRNR1).

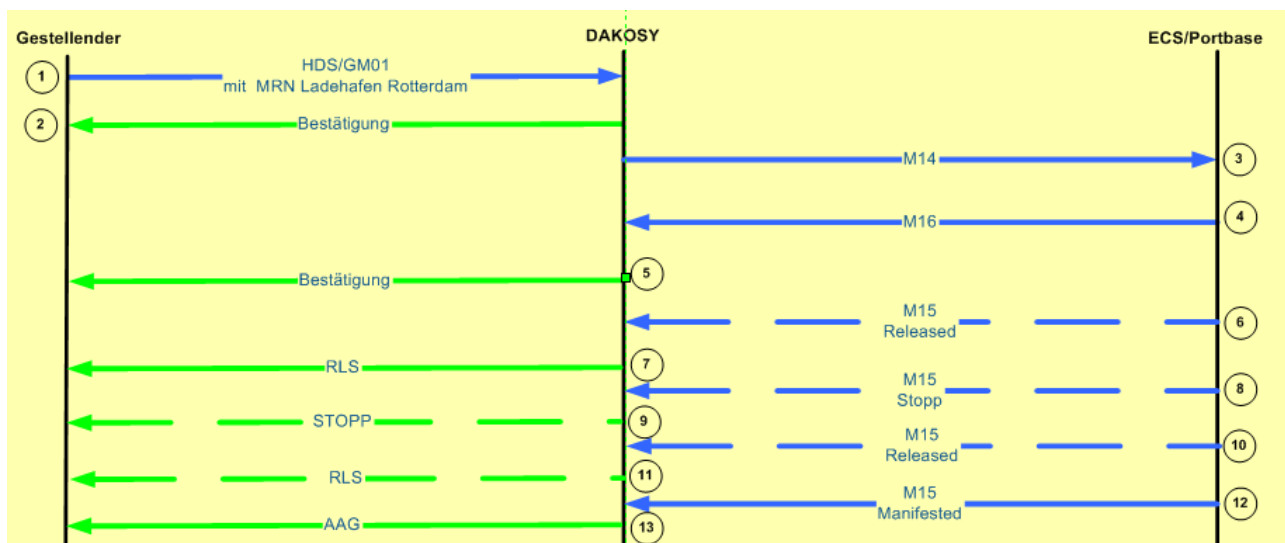
Country	Checking
CZ	Digit 11 „2“
DK	Digit 11 „2“
EE	Digit 11 „8“
ES	Digit 11 „1“
HU	Digit 11 „2“
LT	Digit 11 „2“
SK	Digit 9 „EX“
ST	Digit 11 „2“

9 Process description for the communication with Portbase for ECS Netherlands

General information:

- The process data entry GM01 at Dakosy corresponds with the ZAPP-AES process.
- If an error at Dakosy occurred the data record has to be transmitted as original again.
- Alle confirmations refer to the forwarder's reference
- After a data cancellation the forwarder's reference may not be used again.
- After an error – assigned by the Dutch customs system the presentation has to be cancelled, the cancellation will only be confirmed by Dakosy.

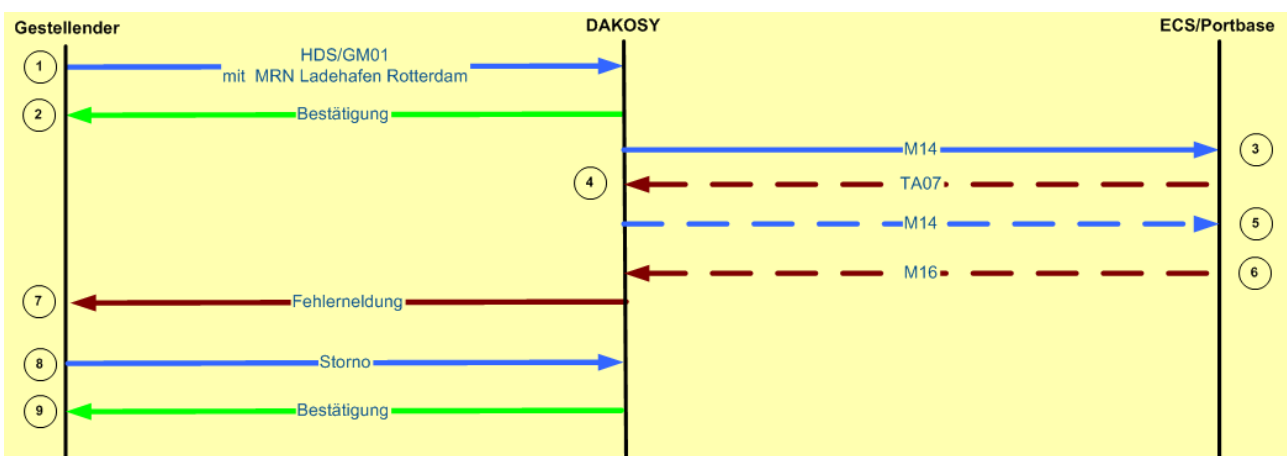
9.1 Process procedure error- free data sequence at Dakosy and ECS/Portbase



- 1 Data entry GM01
- 2 Confirmation (APERAK or field number)
- 3 Data transmission to the Dutch ECS system
- 4 Confirmation of data entry by the Dutch ECS system
- 5 Transmission of the confirmation to the presentor (APERAK or field number)

- 6 After 5 minutes – if no means of control are ordered—a released message is being reported by the Dutch ECS system
- 7 Transmission of the released message to the presentor (APERAK or field numbers)
- 8 Means of control may be ordered both after and instead of the first release
- 9 The order means of control is transmitted to the presentor (APERAK or field numbers).
- 10 Release to export by the Dutch ECS system
- 11 Transmission of the release to the presentor (APERAK or field numbers)
- 12 Confirmatin of export niederländische ECS System
- 13 Transmission of export confirmation to the presentor (APERAK or field numbers)

9.2 Process procedure to ECS/Portbase error message



1. Data entry GM01
2. Confirmation (APERAK or field numbers)
3. Data transmission to the Dutch ECS system
4. Technical error message by the Dutch customs system
5. Corrections and new transmission by Dakosy if necessary
6. Professional error message by the Dutch ECS system
7. Transmission of error message to the presentor
8. Cancellation of the HDS by Dakosy
9. Confirmation of the cancellation